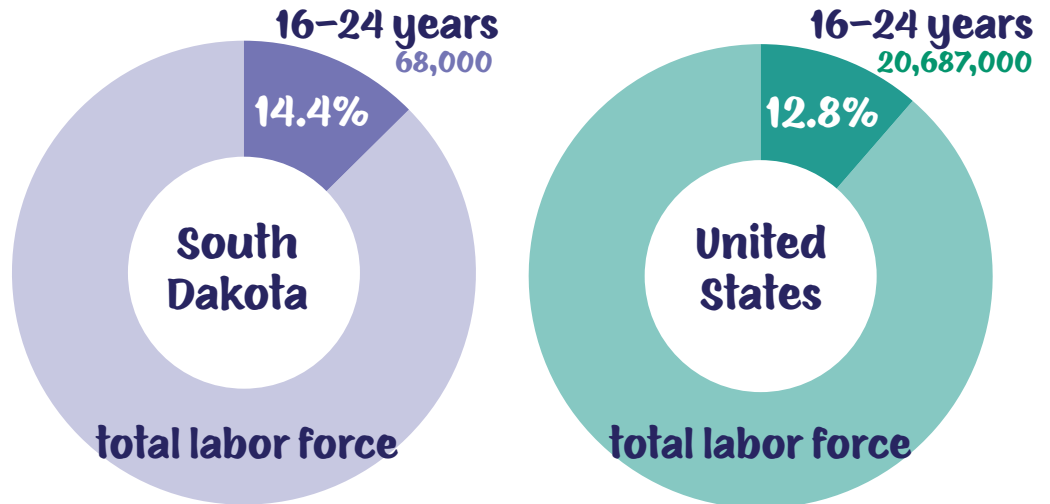


QUICK FACTS

on South Dakota's Youngest Workers

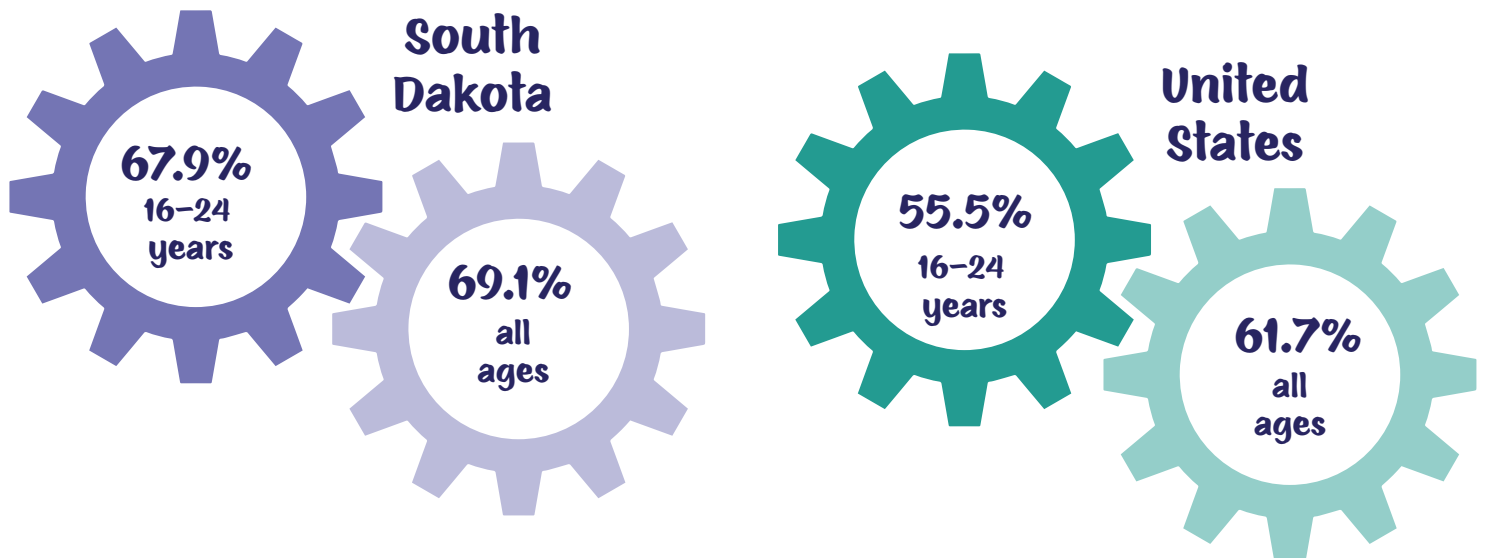
Youngest Workers (16-24 years) as a Percentage of the Labor Force

Youth make up a slightly larger share of the labor force in South Dakota.



Source: U.S. Bureau of Labor Statistics, Current Population Survey, 2021 annual averages.

Labor Force Participation Rates



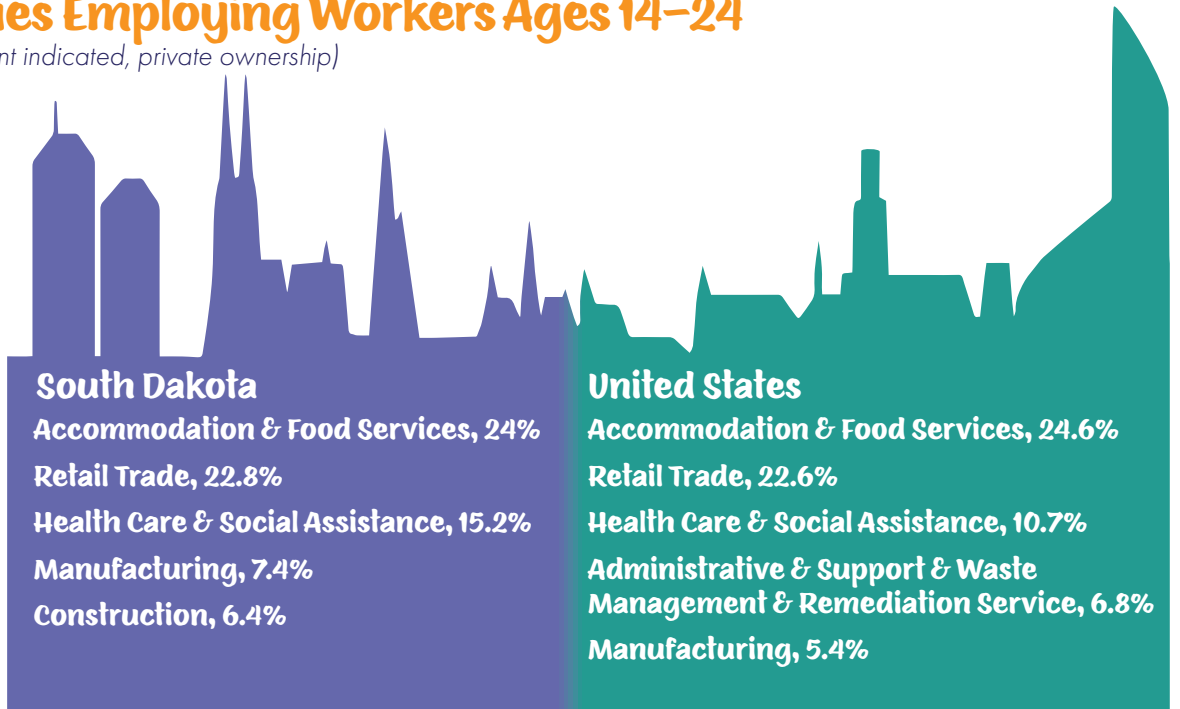
Those 16-24 participate in the labor force at a significantly higher rate in South Dakota compared to the nation.

Source: U.S. Bureau of Labor Statistics, Current Population Survey, 2021 annual averages.

Top Five Industries Employing Workers Ages 14–24

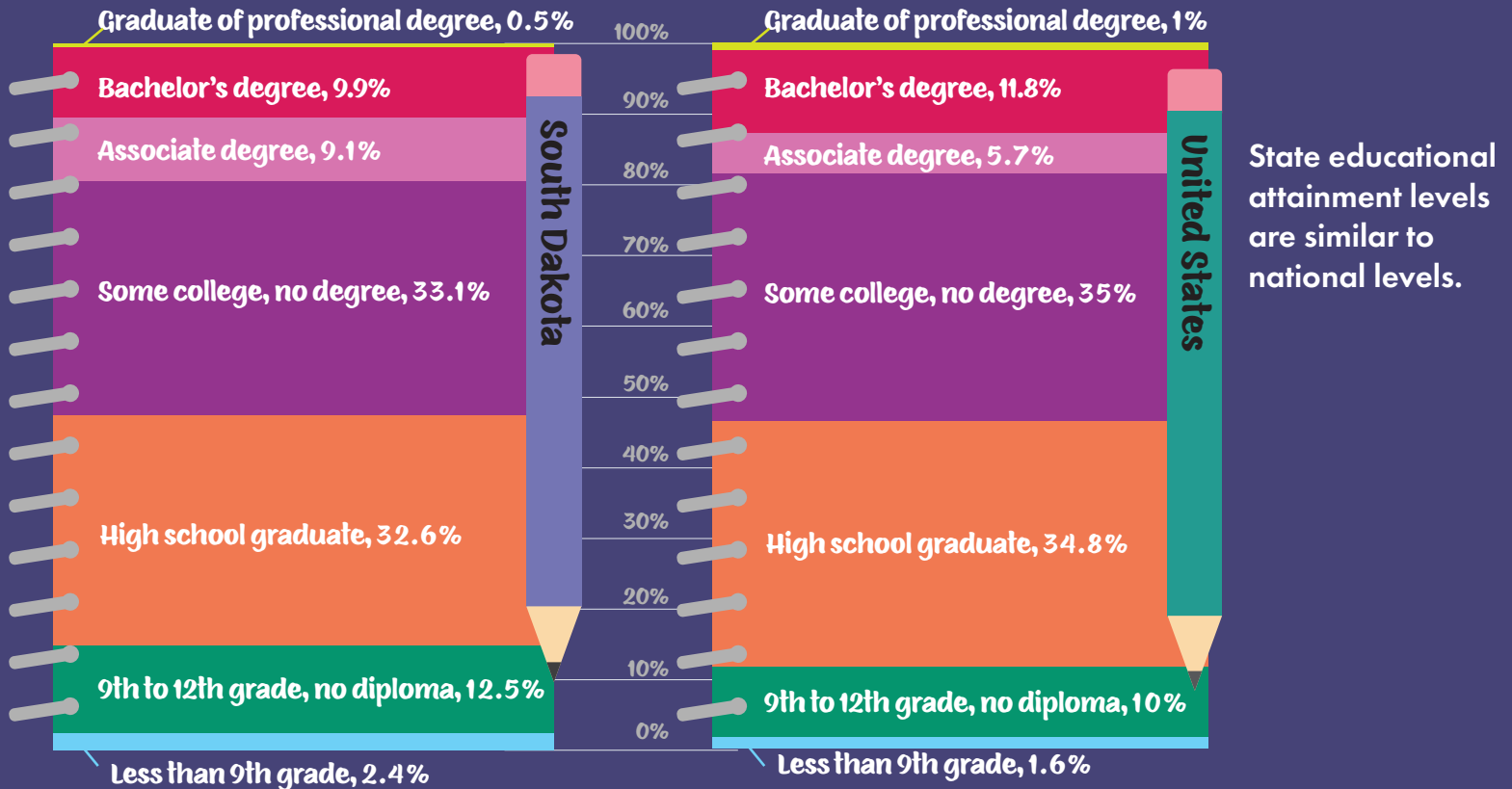
(Percentage of total employment indicated, private ownership)

While they closely mirror their national counterparts in the Accommodation & Food Service as well as Retail Trade, South Dakota's youngest workers make up greater percentages of the workforce in Health Care & Social Assistance, Manufacturing, and Construction.



Source: U.S. Census Bureau, 2021 Quarterly Workforce Indicators Data, Longitudinal-Employment Household Dynamics Program.

Educational Attainment of the Population 18–24 years



Source: U.S. Census Bureau, 2021, American Community Survey 1-year Estimates.

For more information, contact the Labor Market Information Center, South Dakota Department of Labor and Regulation, 605.626.2314, dlr.sd.gov/lmic. For TTY Services, call 711.

Auxiliary aids and services are available upon request to individuals with disabilities. State and federal laws require the Department of Labor and Regulation to provide services to all qualified persons without regard to race, color, creed, religion, age, sex, ancestry, political affiliation or belief, national origin, or disability.

U.S. DOL Funded. See dlr.sd.gov/lmic/eta_grant.aspx.

Equal Opportunity Employer/Program.