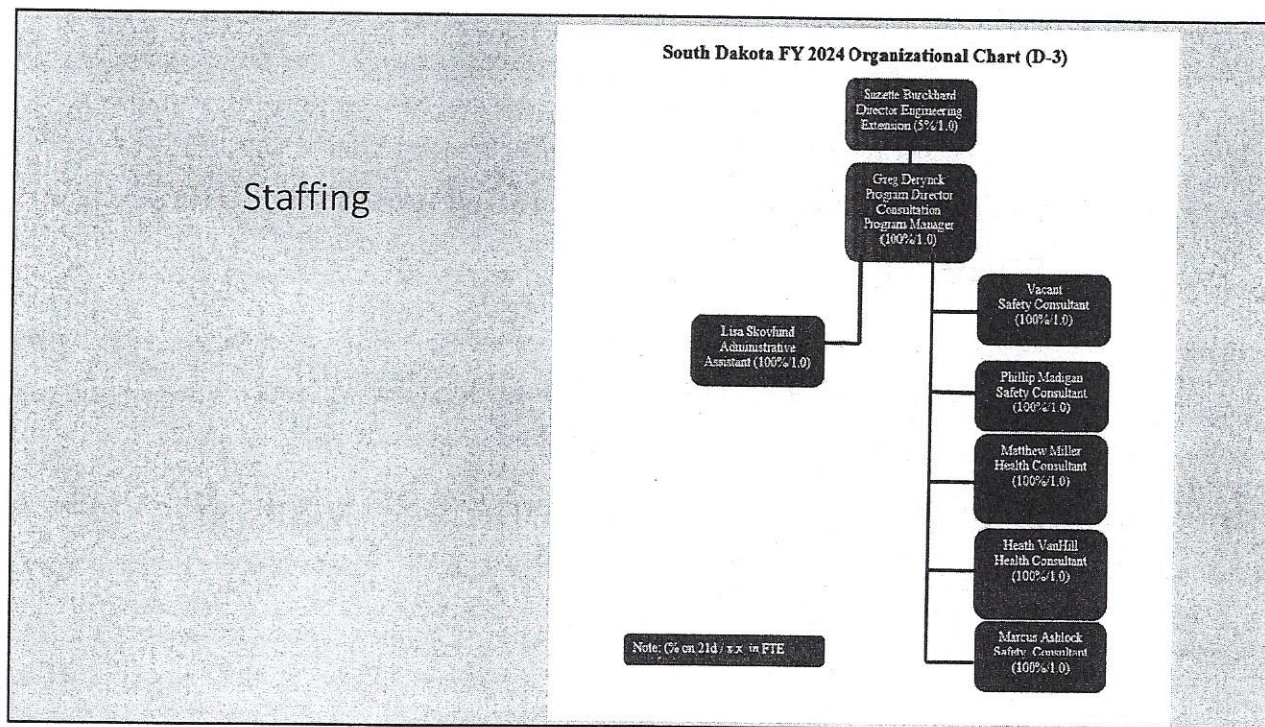


1



2

Funding

- Stevens Amendment Statement: The South Dakota On-Site Consultation program, at the time of initial publication of this document (07/10/2023), is funded by a cooperative agreement for \$600,000 federal funds, which constitutes 90% percent of the program budget. Ten percent, or \$64,194 of the program budget, is financed through the South Dakota Department of Labor and Regulation.

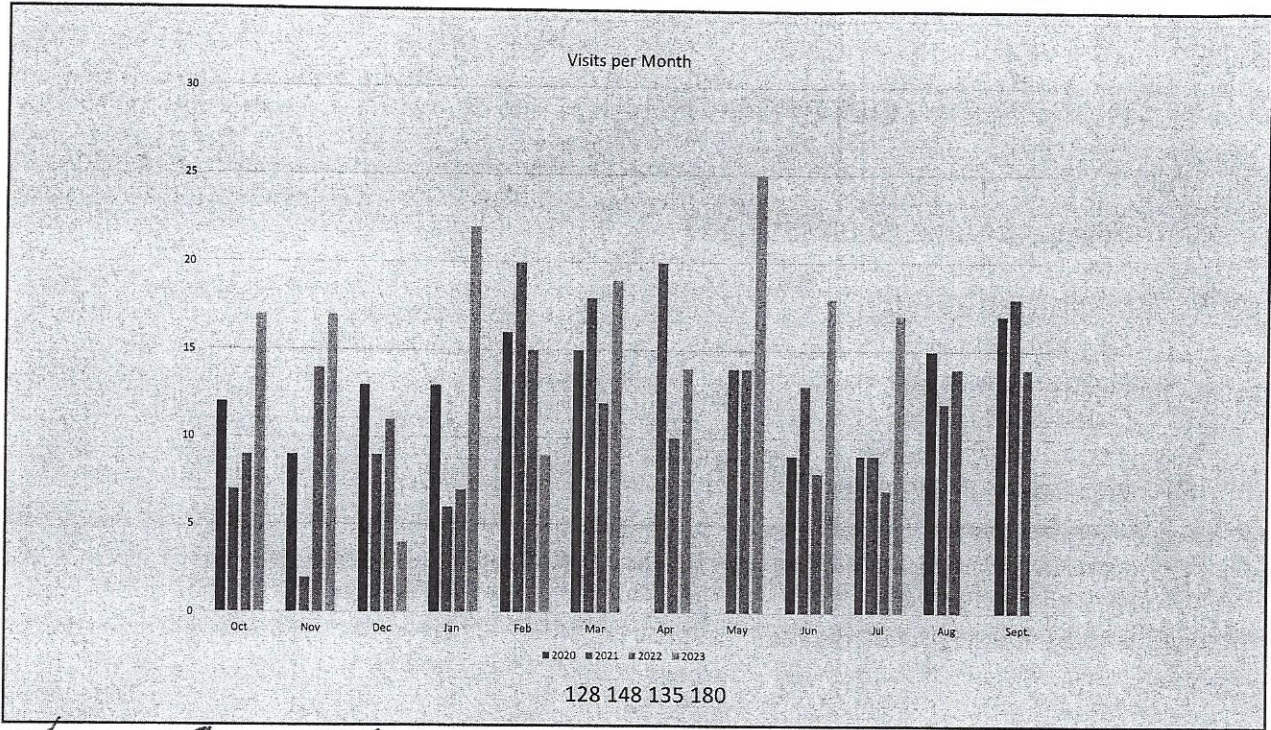
3

We operate on the federal fiscal year; begins on October 1

In FY 22, we performed 135 on site visits.

To date in FY 23, we have done 180 visits

4



$\frac{48}{158}$ $\frac{19}{231}$ $\frac{20}{153}$ $\frac{20}{176}$ $\frac{22}{221}$ $\frac{23}{280}$

Out of all states, we are 5th in the nation in number of samples sent in for analysis.

1 in 3 visit involves sampling

Emphasis Programs- Regional

- Region 8 - CO, MT, ND, SD, UT, WY
- Noise Induced Hearing Loss
- Automotive Services
- Beverage Manufacturing
- Grain Handling Facilities
- Powered Industrial Vehicles
- Roadway Work Zone Activities
- Oil and Gas Industry
- Workplace Violence Hazards at Residential Intellectual and Developmental Disability Facilities
- Fall Hazards in Construction
- Silica in Cut Stone and Slab Handling

7

Emphasis Programs- National

- **Combustible Dust**
- **Coronavirus (COVID-19)**
- **Fall Prevention/Protection**
- **Hazardous Machinery**
- **Heat**
- **Hexavalent Chromium**
- **Lead**
- **Primary Metal Industries**
- **Process Safety Management (PSM)**
- **Shipbreaking**
- **Silica, Crystalline**
- **Trenching and Excavation**

8

Other uses for South Dakota's OSHA Consultation program?

9

Marketing

- Trade shows
- Engage with trade groups
- Speaking engagements
- Mailings
- Upcoming radio spots in a couple of markets

10

Other Marketing Opportunities

- Are there trade groups in the state that we could join or partner with for greater exposure?

11

12