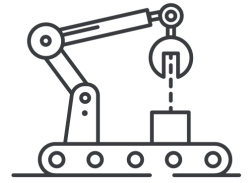


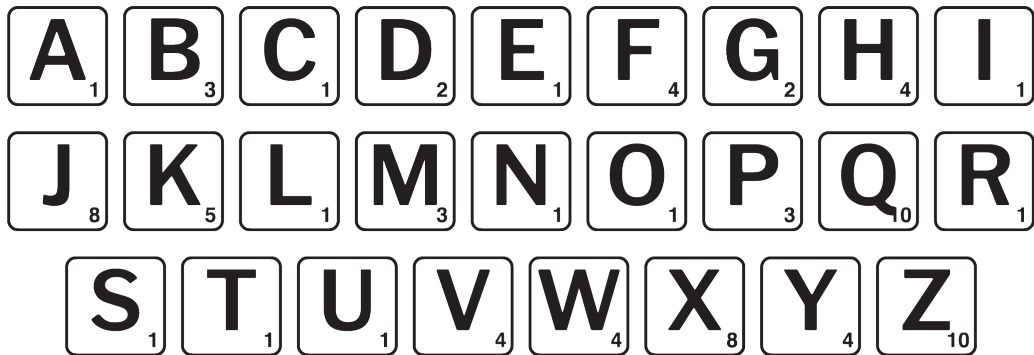
South Dakota Career Peeks

Manufacturing Cluster



Maintenance and Repair Workers fix and maintain machines, equipment and buildings. They may paint or do repairs on windows or doors. They also do basic electrical, plumbing or welding work.

Each of the words below are tools a Maintenance and Repair Worker may use. Find out how much each word is worth using the letter tiles below.



wrench = _____

pliers = _____

hammer = _____

saw = _____

paintbrush = _____

flashlight = _____

screwdriver = _____

drill = _____



at what you can become!

