

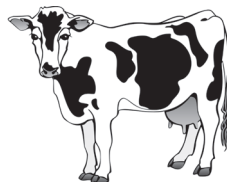
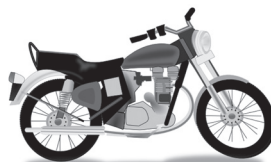
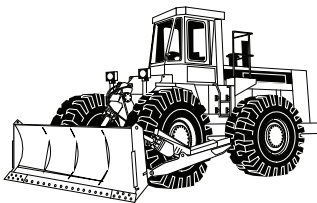
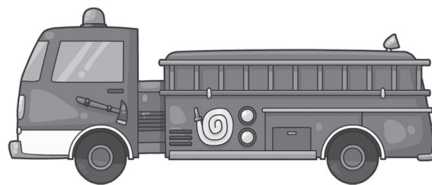
South Dakota Career Peeks

Transportation,
Distribution & Logistics
Cluster



Highway Maintenance Workers keep streets and highways in good condition and safe to drive on. They patch broken pavement. They may repair guard rails on the side of the road or fix highway signs. Highway maintenance workers may also install or fix fence near roadways to catch snow in the winter.

Circle the types of vehicles that use highways. They are just a few of the reasons it is important our roads be safe!



Take a  **peek**

at what you can become!

