

Proposed Meeting Agenda
SOUTH DAKOTA ELECTRICAL COMMISSION
via Microsoft Teams
Meeting ID: 274 589 297 906| Passcode: f9KpAv
or Call +1 605-679-7263 ID 528 339 798

Wednesday, January 8, 2025, at 9:00 a.m. CST

- A. Call to Order
 - B. Consent Agenda
 - i. Approval of Agenda
 - ii. Approval of October 8 Minutes
 - C. Public Comment
 - D. Fee Increase Bill
 - E. Surge Protection Requirements
 - F. Machinery Designation Applications
 - i. Hitachi HT20SII
 - ii. M270 Lathe
 - iii. Matsuura 800 VG
 - iv. MC-800 VF CNC
 - G. Hutterite Colony Wiring Process
 - H. SDEC Board Membership
 - I. Executive Session pursuant to SDCL 1-25-2, as necessary
 - J. President's Report
 - K. Inspector's Report
 - L. Program Director's Report
 - M. Next Meeting
 - N. Adjournment
- Tor Sorlien
Brent Schoulte
Pamela Overweg
April 10, 2025

Meeting Minutes
SOUTH DAKOTA ELECTRICAL COMMISSION
Microsoft Teams Meeting
October 8, 2024, 9:00 a.m. CDT

Tor Sorlien called the meeting to order at 9:01 a.m. A quorum was present.

Members Present: Dave Eide, Doug Fuerst, Tor Sorlien, Bob Jarding, Stephen Burgess, Carl Odde

Members Absent: Rick Cronin

Others Present: Pamela Overweg, Program Director, Jerry McCabe, Division Director, Brent Schoulte, Lead Inspector SDEC, Kelsey Henson, Program Assistant, Laura Korson, Attorney, James Marsh, Hearing Examiner, Teddi Mueller, Sioux Empire HBA

Doug Fuerst made a motion to approve the consent agenda. Carl Odde seconded the motion. **MOTION PASSED.**

James Marsh dismissed case no. 2024-05 for Daniel Beazley based on the failure of the defendant to appear for the hearing. No administrative hearing was held.

Director Overweg presented the board with information on the process for inspection reports and correction orders. The board discussed.

Director Overweg presented the board with information on possible license types to make obsolete in a future rules packet. Tor Sorlien provided additional information on the Class B license. Director Overweg will add the phasing out of the Class B license to a future rules packet. The 501(d) license, and subsequent process for the Hutterite colonies, will be discussed at the January meeting.

Tor Sorlien asked for public comment. Teddi Mueller asked if the board had any questions for her. Brent Schoulte provided the commission with an update on what he learned at the Western Section IAEI meeting.

Tor Sorlien did not have anything to report as president.

Director Overweg updated the commission on the status of possible future fee increases, the ongoing negotiations with the new database, inspector retirement, billing reconciliation, and the current rules packet progress.

The next commission meeting was tentatively scheduled for January 7, 2025.

Dave Eide made a motion to adjourn the commission meeting. Bob Jarding seconded the motion. **MOTION PASSED.** The meeting adjourned at 10:04 a.m.

2025 South Dakota Legislature Draft 322

Requested by: at the request of the Department of Labor and Regulation

1 **An Act to revise amounts for inspection fees for electrical installations.**

2 BE IT ENACTED BY THE LEGISLATURE OF THE STATE OF SOUTH DAKOTA:

3 **Section 1. That § 36-16-30 be AMENDED:**

4 **36-16-30.** The State Electrical Commission may promulgate rules, ~~pursuant to~~ in
5 accordance with chapter 1-26, to establish and collect installation inspection fees for:

- 6 (1) New residential installations, which are tiered based on ampere capacity, ~~not to~~
7 ~~exceed three hundred~~ three hundred ninety dollars, ~~plus a fee for~~ circuits;
- 8 (2) Service connections on other installations, which are tiered based on ampere
9 capacity, ~~not to exceed three hundred seventy five~~ three hundred ninety dollars,
10 ~~plus a fee for~~ circuits;
- 11 (3) Circuit installations or alterations, which are tiered based on ampere capacity, ~~not~~
12 ~~to exceed fifty sixty-five~~ dollars;
- 13 (4) ~~Remodeling work for each~~ projects involving:
 - 14 (a) An opening or connection, ~~not to exceed three dollars each and one dollar~~
15 ~~and fifty cents for each additional opening or connection,~~ lighting;
 - 16 (b) A lighting fixture, ~~not to exceed three dollars for the first forty fixtures and~~
17 ~~not to exceed one dollar and fifty cents for each additional lighting fixture,~~
18 ~~motor; or~~
 - 19 (c) A motor or special equipment, ~~not to exceed eighteen dollars;~~
- 20 (5) Apartment buildings ~~per unit,~~ not to exceed fifty one hundred fifty dollars per unit;
- 21 (6) ~~Outdoor or area lighting per lighting standard not to exceed sixty dollars;~~
- 22 (7) ~~Field irrigation systems not to exceed one hundred dollars plus three dollars per~~
23 ~~motor;~~
- 24 (8) Mobile home service and feeders, ~~not to exceed eighty one hundred~~ dollars per
25 ~~unit; recreational~~
- 26 (7) Recreational vehicle service, ~~not to exceed twenty twenty-five~~ dollars per unit;
- 27 (9) ~~Swimming pools not to exceed two hundred dollars;~~
- 28 (10)(8) Each late correction order or wiring permit procedure, ~~not to exceed one~~
29 ~~hundred fifty~~ two hundred fifty dollars;

1 ~~(11) Carnivals and seasonal dwellings for each generator or transformer and~~
2 ~~reinspection of each unit not to exceed thirty dollars;~~

3 ~~(12)~~(9) Wiring permits, not to exceed ~~fifteen~~ twenty dollars; and

4 ~~(13)~~(10) Modular homes and structures manufactured out-of-state, not to exceed ~~one~~
5 ~~hundred fifty~~ two hundred ten dollars per day plus the inspector's travel and living
6 expenses.

7 A minimum fee of one hundred fifty dollars ~~shall~~ must be imposed if any inspection
8 fee calculated under this section is less than one hundred fifty dollars.

9 The commission may also promulgate rules, ~~pursuant to~~ in accordance with chapter
10 1-26, to set an allotted number of inspections for each installation under this section.

DRAFT

**DEPARTMENT OF LABOR & REGULATION
ELECTRICAL COMMISSION
CONDITION STATEMENT**

	ACTUAL FY2023	ACTUAL FY2024	BUDGETED FY2025	BUDGETED FY2026
Licenses, Permits, & Fees	\$1,903,557	\$1,835,310	\$2,014,295	\$3,439,940
Fines, Forfeits, & Penalties	\$39,650	\$1,730	\$77,900	\$125,800
Charges for Sales & Services	\$197	\$460	\$400	\$400
Nonoperating Revenues	\$8,351	\$29,029	\$10,000	\$10,000
Refund of Prior Year's Expenses	\$350			
TOTAL RECEIPTS	\$1,952,105	\$1,866,529	\$2,102,595	\$3,576,140
Personal Services	\$1,722,031	\$1,770,833	\$2,077,055	\$2,139,367
Travel	\$261,251	\$247,096	\$328,082	\$328,082
Contractual Services	\$167,751	\$366,594	\$339,757	\$339,757
Supplies & Materials	\$38,488	\$36,289	\$26,750	\$26,750
Capital Outlay	\$15,989	\$10,926	\$18,000	\$18,000
Other Expenses	\$1,664		\$0	\$0
Indirect Costs	\$68,365	\$84,250	\$101,776	\$104,829
TOTAL DISBURSEMENTS	\$2,275,540	\$2,515,988	\$2,891,420	\$2,956,785
NET (Receipts less Disbursements)	(\$323,435)	(\$649,459)	(\$788,825)	\$619,355
BEGINNING CASH BALANCE	\$1,526,055	\$1,202,621	\$553,162	(\$235,663)
ENDING CASH BALANCE	\$1,202,621	\$553,162	(\$235,663)	\$383,692

E. Surge Protection Requirements

215.18 Surge Protection.

- **Surge-Protective Device.**
 - Where a feeder supplies any of the following, a surge-protective device (SPD) shall be installed:
 - (1) Dwelling units
 - (2) Dormitory units
 - (3) Guest rooms and guest suites of hotels and motels
 - (4) Areas of nursing homes and limited-care facilities used exclusively as patient sleeping rooms
- **Location.** The SPD shall be installed in or adjacent to distribution equipment, connected to the load side of the feeder, that contains branch circuit overcurrent protective device(s) that supply the locations specified in 215.18(A).
 - Informational Note:
 - Surge protection is most effective when closest to the branch circuit. Surges can be generated from multiple sources including, but not limited to, lightning, the electric utility, or utilization equipment.
- **Type.** The SPD shall be a Type 1 or Type 2 SPD.
- **Replacement.** Where the distribution equipment supplied by the feeder is replaced, all of the requirements of this section shall apply.
- **Ratings.** SPDs shall have a nominal discharge current rating (I_n) of not less than 10kA.

225.42 Surge Protection.

- **Surge-Protective Device.** Where a feeder supplies any of the following, a surge-protective device (SPD) shall be installed:
 - (1) Dwelling units
 - (2) Dormitory units
 - (3) Guest rooms and guest suites of hotels and motels
 - (4) Areas of nursing homes and limited-care facilities used exclusively as patient sleeping rooms
- **Location.** The SPD shall be installed in or adjacent to the distribution equipment that is connected to the load side of the feeder and contains branch circuit overcurrent protective device(s) that supply the location specified in **225.42(A)**.
 - Informational Note:
 - Surge protection is most effective when closest to the branch circuit. Surges can be generated from multiple sources including, but not limited to, lightning, the electric utility, or utilization equipment.
- **Type.** The SPD shall be a Type 1 or Type 2 SPD.
- **Replacement.** Where the distribution equipment supplied by the feeder is replaced, all of the requirements of this section shall apply.
- **Ratings.** SPDs shall have a nominal discharge current rating (I_n) of not less than 10kA.
 - Informational Note:

- Lead lengths of conductors to the SPD should be kept as short as possible to reduce let-through voltages.

230.67 Surge Protection.

- **Surge-Protective Device.** All services supplying the following occupancies shall be provided with a surge-protective device (SPD):
 - (1) Dwelling units
 - (2) Dormitory units
 - (3) Guest rooms and guest suites of hotels and motels
 - (4) Areas of nursing homes and limited-care facilities used exclusively as patient sleeping rooms
- **Location.** The SPD shall be an integral part of the service equipment or shall be located immediately adjacent thereto.
 - *Exception:*
 - *The SPD shall not be required to be located at the service equipment as required in [230.67\(B\)](#) if located at each next level distribution equipment downstream toward the load.*
- **Type.** The SPD shall be a Type 1 or Type 2 SPD.
- **Replacement.** Where service equipment is replaced, all of the requirements of this section shall apply.
- **Ratings.** SPDs shall have a nominal discharge current rating (I_n) of not less than 10kA.

SOUTH DAKOTA ELECTRICAL COMMISSION

MACHINERY POLICY

1. **Enclosed Industrial Control Panel and Machinery listed by NRTL:** General Inspection for installation. Green Sticker
2. **Enclosed Industrial Control Panel listed by NRTL and Machinery labeled by third party inspection agency or other third-party organization:** General Inspection for Installation. Green Sticker. Third party:
 - a. Adheres label indicating the installation complies with nationally recognized standards or tests determining suitable usage for said installation in manner utilized.
3. **Enclosed Industrial Control Panel listed by NRTL and no third party involved to label:** Inspection more in depth to analyze motor, machinery and wire size. Owner documents acceptance of installation. Green Sticker Owner statement:
 - a. Entity is of the opinion the machinery complies with NEC 670.
 - b. Entity accepts responsibility and liability for the machinery.
 - c. Entity is of the opinion the machinery is safe for the use intended.
4. **No listing on installation:** Apply for industrial machinery designation per 20:44:22:05.
 - a. Commission approves authorization as designated machinery. Green Sticker.
Requirements:
 - No standard has been prepared or adopted
 - Owners states machinery is safe for intended use
 - The machinery is specific electrical equipment for use by the applying entity and not a line as manufactured, stored, sold, installed, or attached
 - Comply with Article 670
 1. Nameplate
 2. Provide proof of compliance with NFPA 79 by licensed professional. (stamped plans by a PE in an electrical discipline)
 - b. Commission denies authorization as designated machinery. Field listing or labeling or other assurances by a licensed engineer. Green Sticker.
Requirements:
 - Label or identification adhered
 - Owner states machinery is safe for intended use
 - Comply with Article 670
 1. Nameplate
 2. Provide proof of compliance with NFPA 79 by licensed professional. (stamped plans by a PE in an electrical discipline)

[Machinery Designation Application](#)

Notes:

1. All options require compliance with NEC Article 670.
2. Label Indicates: Installation complies with nationally recognized standards or tests determining suitable usage for said installation in manner utilized.

20:44:22:02. Electrical equipment to comply with rules. A person or the person's agent or employee may not sell, offer for sale, or expose for sale any electrical equipment designed for attachment to or installation in or on any electrical circuit or system for light, heat, or power which does not comply with this article.

20:44:22:03. Electrical equipment to conform to approved purposes and show identification. Only the electrical equipment approved in accordance with § 20:44:22:04 for the purpose intended may be installed to use electricity for light, heat, or power. This includes all materials used to install such electrical equipment. The manufacturer's name, trademark, or other identification symbol must be placed on or provided with the electrical equipment, together with the rated voltage, current, wattage, or other applicable ratings necessary to determine the purpose and use for which they are intended.

20:44:22:04. State electrical inspector authorized to enforce rules and specifications. The state electrical inspector shall enforce all rules and specifications in this article as necessary to determine conformity of electrical equipment with approved methods of construction in order to protect life and property. The label of a nationally recognized electrical testing laboratory, inspection agency, or other organization concerned with product evaluation that maintains periodic inspection during production of equipment or materials, whose label indicates compliance with nationally recognized standards or tests to determine suitable usage in a specified manner, is prima facie evidence that such electrical equipment is in conformity and listed for installation under the provisions of this article.

20:44:22:05. Special approval of state electrical inspector. The state electrical inspector may grant special approval of electrical equipment as machinery if no standard has been prepared or adopted to which they should conform. Special approval applies only to the specific electrical equipment approved and not to the line as manufactured, stored, sold, installed, or attached and may be granted only for electrical equipment as designated by the owner as machinery which, in the opinion of the owner, is safe for the use intended. All special approvals must first be authorized by the commission.

The state or any of its political subdivisions does not assume any liability for damage or injury to persons or property because of the use of such electrical equipment designated as machinery.

SOUTH DAKOTA DEPARTMENT OF LABOR AND REGULATION
SOUTH DAKOTA ELECTRICAL COMMISSION

217 West Missouri Avenue, Pierre, SD 57501
Tel: 605.773.3573 Toll-Free: 1.800.233.7765 Fax: 605.773.6213 dlr.sd.gov/electrical

MACHINERY DESIGNATION APPLICATION

Entity Name: Precision Machining & Fabrication Contact Person: Blake Schmieg

Tel: (320) 304 - 1530

Address: 14532 486th Ave Big Stone City SD 57216
STREET CITY STATE ZIP

Installation Address: : 14532 486th Ave Big Stone City 57216
STREET CITY ZIP

Yes No: Entity presents application as official notice that Entity is designating the following equipment at the installation address as machinery.

Description of Machinery:
Hitachi Seiki HT20SII CNC Mill
Ser # NR24817

Name of Professional Engineer involved: Bruce L Palmer License No.: MN9375 & SD9017

Please answer the following questions:

- Yes No: The machinery as a packaged unit is available in a listed form.
- Yes No: Has an electrical standard been prepared or adopted to which the machinery should conform. (e.g. NRTL or NFPA 79: Electrical Standard for Industrial Machinery)
- Yes No: The machinery is specific electrical equipment for use by the applying entity and not a line as manufactured, stored, sold, installed, or attached.
- Yes No: A label indicating the installation complies with nationally recognized standards or tests determining suitable usage for said installation in manner utilized has been adhered to machinery by 3rd party conducting field listing.
- Yes No: In the opinion of the Entity the machinery complies with NEC 670.
- Yes No: Entity accepts responsibility and liability for the machinery.
- Yes No: Entity is of the opinion the machinery is safe for the use intended.

By my signature below, I do solemnly swear the statements made herein are true and correct to the best of my knowledge and belief. Completion of this application does not guarantee approval.

Name: Bruce L Palmer

Position: Electrical Engineer

Bruce Palmer
SIGNATURE

11 / 20 / 2024
DATE

To Submit: Mail or fax to the South Dakota Electrical Commission (contact information at the top of this form).

Ensure your application includes:

- Signature and Date
- Attach Stamped Engineering plans

**BRUCE PALMER
CONSULTING ELECTRICAL ENGINEER
2304 W 9TH STREET
ALBERT LEA, MN 56007
(507) 383 6290**

**EQUIPMENT EVALUATION REPORT
Page 1 of 7**

MANUFACTURER: Hitachi Seiki Co LTD, Cyber Machinery Sales LLC, Waukesha, WI 53189

MODEL NUMBER: HT20SII CNC

SERIAL NUMBER: NR24817

DESCRIPTION: Hitachi Seiki Control Panel (P.O. # V-BS101524)

DATE EXAMINED: Nov 22, 2024

SCCR RATING: 5KA

1. **General conditions.** The subject equipment (“equipment”) was supplied to Precision Machining & Fabrication, 14532 486th Ave, Big Stone City, SD 57216, to be used in their production process.

1.1 This evaluation applies to only the Hitachi Seiki Model HT20SII CNC serial # NR24817 field inspected.

2. **Standards Applied in the Evaluation.** The construction requirements of **Underwriters Laboratories’ Standards for Robots and Robotic Equipment, UL 1740, 4th Edition, dated 2018, NFPA 79 Electrical Standards for Industrial Machinery 2018 Edition, Underwriters Laboratories’ Standards for Safety for Industrial Control Equipment, UL 508a, 3rd Edition, dated 04/16/2020** (“the standard”), were employed in evaluating the equipment.

3. **Compliance with the Standard.** I have found that the equipment is in compliance with all applicable construction requirements of the Standard, as listed in this report.

Any performance testing is outside the scope of this investigation, and was not performed.

Applicable Construction Requirements of UL 1740 (2018)

Construction

- 7.0 Frame and Enclosure
 - 7.6 Bonding
 - 7.7 Parts of enclosures
- 14.0 Field Connections
 - 14.1 General
 - 14.2 Terminals
- 16.0 Stationary Robotic Equipment
- 19.0 Current-Carrying Parts
- 20.0 Conductors
 - 20.1 General
 - 20.2 Interconnecting cords and cables
 - 20.3 Interconnection of units
- 21.0 Grounding
 - 21.1 General
 - 21.2 Grounding means
 - 21.3 Terminals and leads
- 22.0 Bonding of internal parts
 - 22.1 General
 - 22.2 Construction and connection
- 26.0 Capacitors and Varistors
 - 26.1 Isolating components
 - 26.2 Across-the-line components
 - 26.3 General
- 27.0 Supply-circuit Disconnecting Means
 - 27.3 Supply conductors to be disconnected
 - 27.4 Connections to supply lines
 - 27.5 Exposed live parts
 - 27.9 Attachment plug and receptacle
- 28.0 Overcurrent Protection, Control-Circuit Conductors
- 29.0 Spacings
 - 29.2 Low-Voltage class 2 circuits
 - 29.3 Other than safety circuits
 - 29.7 Terminals and other circuits
- 30.0 Field Wiring Space
- 31.0 Separation of Circuits
- 32.0 Marking
 - 32.89 Wiring
 - 32.91 Cautionary Markings

Applicable Constructions Requirements of NFPA 79 (2018 Addition)

79.1.1.1 Thru 79.18.10.2, Annex A Thru Annex I

Applicable Construction Requirements of UL 508a (04/16/2020)

Part 1- General

Construction

All Panels	Sections 7-17
Enclosed Panels	Sections 18-27
Power Circuits	Sections 28-36
Control Circuits	Sections 37-48
Rating	Sections 49-51
Markings	Sections 52-61

Part 2- Specific

Enclosures	Sections 62-64
Industrial Machinery	Sections 65-67
Service Equip Use	Sections 73-77
Elevator Control	Sections 80
Flame Control	Sections 81-83
Air Cond & Refrig	Sections 88-92

Supplement SA- Specific

Component Require	Sections SA1-SA10
-------------------	-------------------

Supplement SB- Short Circuit Ratings

Short Circuit	Sections SB1-SB6
---------------	------------------

Appendix A

Appendix B

4. Identification of components.

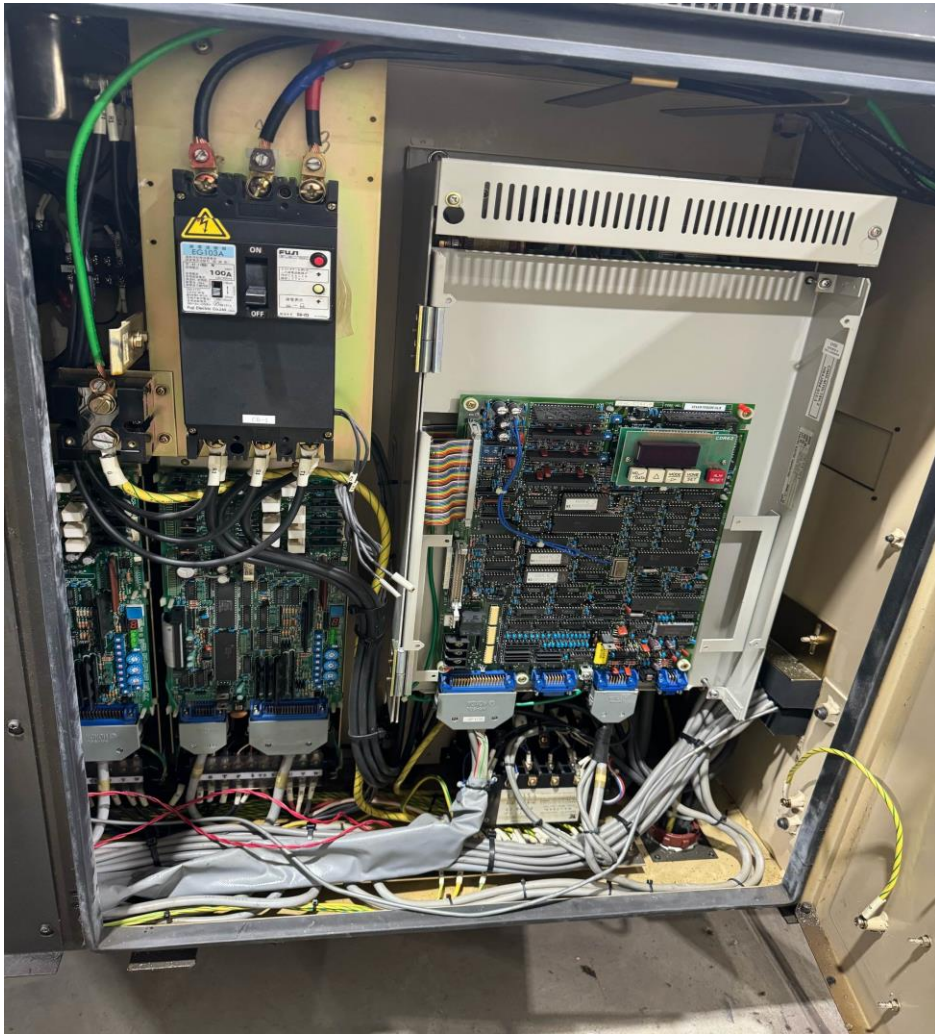
- 1) All components of the subject equipment are included in the following list.

All components are major testing laboratory listed, field listed or component recognized. Copies of the manufacturer's product literature and evidence of listing are available. In the case of non-disclosure agreements with the manufacturer, all component information cannot be printed.

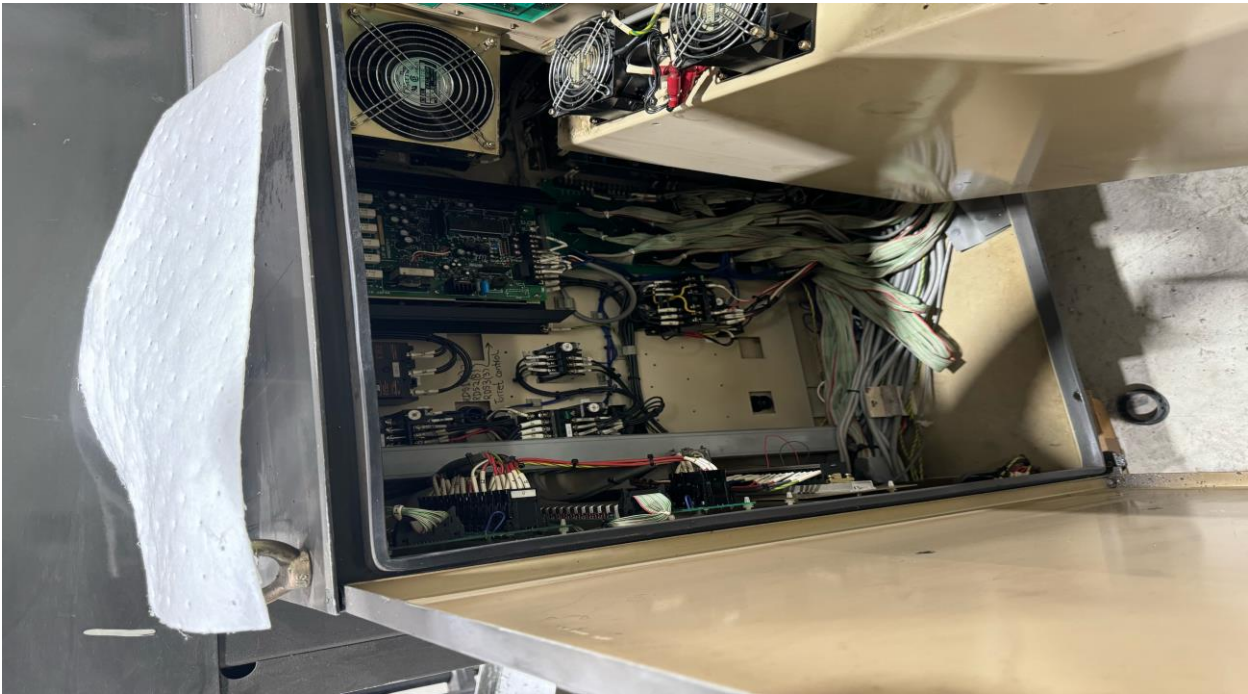
Bruce Palmer – Electrical Engineer
Description: Hitachi Seiki
Model: HT20SII CNC
P.O.#: V-BS101524
Date: Nov 22, 2024
Page: 4 of 7



Bruce Palmer – Electrical Engineer
Description: Hitachi Seiki
Model: HT20SII CNC
P.O.#: V-BS101524
Date: Nov 22, 2024
Page: 5 of 7



Bruce Palmer – Electrical Engineer
Description: Hitachi Seiki
Model: HT20SII CNC
P.O.#: V-BS101524
Date: Nov 22, 2024
Page: 6 of 7



Bruce Palmer – Electrical Engineer
Description: Hitachi Seiki
Model: HT20SII CNC
P.O.#: V-BS101524
Date: Nov 22, 2024
Page: 7 of 7

I hereby certify that I am a professional electrical engineer, registered in the State of Minnesota, that I have no financial or other interest in the sale or manufacturer of the subject equipment, and that the foregoing evaluation was performed by me personally, and is to the best of my knowledge complete and accurate.



11-22-2024

Bruce L. Palmer, P.E.
Minnesota Registration No. 9375

Date:

Bruce L. Palmer – Electrical Engineer

To: SD Department of Labor & Industry
Att: Brent Schoulte
308 South Pierre Street
Pierre, SD 57501

Date: Nov 22, 2024

Project: PE field inspection of Hitachi Seiki Model HT20SII CNC

Project No: V-BS101524

We forward the following:

For your information:

1 copy of PE field inspection of Hitachi Seiki Model HT20SII CNC

Via: US Mail

Copy Form To:

Copy Encl To:

Remarks:

Brent,

Enclosed is your copy of the PE field inspection of Hitachi Seiki Model HT20SII CNC. The panels are used on a process line at Precision Machining & Fabrication, 14532 486th Ave, Big Stone City, SD 57216. If you have any questions feel free to call....

Thanks.

From: Bruce L. Palmer

2304 W 9th Street Albert Lea, MN 56007 Phone 507 383 6290

F. ii. M270 Lathe

SOUTH DAKOTA ELECTRICAL COMMISSION

217 West Missouri Avenue, Pierre, SD 57501

Tel: 605.773.3573 Toll-Free: 1.800.233.7765 Fax: 605.773.6213 dlr.sd.gov/electrical

MACHINERY DESIGNATION APPLICATION

Entity Name: Precision Machining & Fabrication Contact Person: Blake Schmieg

Tel: (320) 304 - 1530

Address: 14532 486th Ave Big Stone City SD 57216
STREET CITY STATE ZIP

Installation Address: 14532 486th Ave Big Stone City 57216
STREET CITY ZIP

[X] Yes [] No: Entity presents application as official notice that Entity is designating the following equipment at the installation address as machinery.

MACHINE DESCRIPTION:
GUZTIOK'BAT LATHE
SER#3/28 4000/300

Name of Professional Engineer involved: Bruce L Palmer License No.: MN9375 & SD9017

Please answer the following questions:

- [] Yes [X] No: The machinery as a packaged unit is available in a listed form.
[X] Yes [] No: Has an electrical standard been prepared or adopted to which the machinery should conform. (e.g. NRTL or NFPA 79: Electrical Standard for Industrial Machinery)
[X] Yes [] No: The machinery is specific electrical equipment for use by the applying entity and not a line as manufactured, stored, sold, installed, or attached.
[X] Yes [] No: A label indicating the installation complies with nationally recognized standards or tests determining suitable usage for said installation in manner utilized has been adhered to machinery by 3rd party conducting field listing.
[X] Yes [] No: In the opinion of the Entity the machinery complies with NEC 670.
[X] Yes [] No: Entity accepts responsibility and liability for the machinery.
[X] Yes [] No: Entity is of the opinion the machinery is safe for the use intended.

By my signature below, I do solemnly swear the statements made herein are true and correct to the best of my knowledge and belief. Completion of this application does not guarantee approval.

Name: Bruce L Palmer

Position: Electrical Engineer

Bruce Palmer
SIGNATURE

11 / 20 / 2024
DATE

To Submit: Mail or fax to the South Dakota Electrical Commission (contact information at the top of this form).

Ensure your application includes:

- [X] Signature and Date
[X] Attach Stamped Engineering plans

**BRUCE PALMER
CONSULTING ELECTRICAL ENGINEER
2304 W 9TH STREET
ALBERT LEA, MN 56007
(507) 383 6290**

**EQUIPMENT EVALUATION REPORT
Page 1 of 7**

MANUFACTURER: Guztiok'bat, Urutzpe, Spain
MODEL NUMBER: M2/70 Lathe
SERIAL NUMBER: 3/28 4000/300
DESCRIPTION: Guztiok'bat Control Panel (P.O. # V-BS101524)
DATE EXAMINED: Nov 22, 2024
SCCR RATING: 0.74KA

1. **General conditions.** The subject equipment ("equipment") was supplied to Precision Machining & Fabrication, 14532 486th Ave, Big Stone City, SD 57216, to be used in their production process.

1.1 This evaluation applies to only the Guztiok'bat Model M2/70 Lathe serial # 3/28 4000/300 field inspected.

2. **Standards Applied in the Evaluation.** The construction requirements of **Underwriters Laboratories' Standards for Robots and Robotic Equipment, UL 1740, 4th Edition, dated 2018, NFPA 79 Electrical Standards for Industrial Machinery 2018 Edition, Underwriters Laboratories' Standards for Safety for Industrial Control Equipment, UL 508a, 3rd Edition, dated 04/16/2020** ("the standard"), were employed in evaluating the equipment.

3. **Compliance with the Standard.** I have found that the equipment is in compliance with all applicable construction requirements of the Standard, as listed in this report.

Any performance testing is outside the scope of this investigation, and was not performed.

Applicable Construction Requirements of UL 1740 (2018)

Construction

- 7.0 Frame and Enclosure
 - 7.6 Bonding
 - 7.7 Parts of enclosures
- 14.0 Field Connections
 - 14.1 General
 - 14.2 Terminals
- 16.0 Stationary Robotic Equipment
- 19.0 Current-Carrying Parts
- 20.0 Conductors
 - 20.1 General
 - 20.2 Interconnecting cords and cables
 - 20.3 Interconnection of units
- 21.0 Grounding
 - 21.1 General
 - 21.2 Grounding means
 - 21.3 Terminals and leads
- 22.0 Bonding of internal parts
 - 22.1 General
 - 22.2 Construction and connection
- 26.0 Capacitors and Varistors
 - 26.1 Isolating components
 - 26.2 Across-the-line components
 - 26.3 General
- 27.0 Supply-circuit Disconnecting Means
 - 27.3 Supply conductors to be disconnected
 - 27.4 Connections to supply lines
 - 27.5 Exposed live parts
 - 27.9 Attachment plug and receptacle
- 28.0 Overcurrent Protection, Control-Circuit Conductors
- 29.0 Spacings
 - 29.2 Low-Voltage class 2 circuits
 - 29.3 Other than safety circuits
 - 29.7 Terminals and other circuits
- 30.0 Field Wiring Space
- 31.0 Separation of Circuits
- 32.0 Marking
 - 32.89 Wiring
 - 32.91 Cautionary Markings

Applicable Constructions Requirements of NFPA 79 (2018 Addition)

79.1.1.1 Thru 79.18.10.2, Annex A Thru Annex I

Applicable Construction Requirements of UL 508a (04/16/2020)

Part 1- General

Construction

All Panels	Sections 7-17
Enclosed Panels	Sections 18-27
Power Circuits	Sections 28-36
Control Circuits	Sections 37-48
Rating	Sections 49-51
Markings	Sections 52-61

Part 2- Specific

Enclosures	Sections 62-64
Industrial Machinery	Sections 65-67
Service Equip Use	Sections 73-77
Elevator Control	Sections 80
Flame Control	Sections 81-83
Air Cond & Refrig	Sections 88-92

Supplement SA- Specific

Component Require	Sections SA1-SA10
-------------------	-------------------

Supplement SB- Short Circuit Ratings

Short Circuit	Sections SB1-SB6
---------------	------------------

Appendix A

Appendix B

4. Identification of components.

- 1) All components of the subject equipment are included in the following list.

All components are major testing laboratory listed, field listed or component recognized. Copies of the manufacturer’s product literature and evidence of listing are available. In the case of non-disclosure agreements with the manufacturer, all component information cannot be printed.

Bruce Palmer – Electrical Engineer
Description: GuztioK'bat
Model: M2/70 Lathe
P.O.#: V-BS101524
Date: Nov 22, 2024
Page: 4 of 7



Bruce Palmer – Electrical Engineer
Description: Guztiok'bat
Model: M2/70 Lathe
P.O.#: V-BS101524
Date: Nov 22, 2024
Page: 5 of 7



Bruce Palmer – Electrical Engineer
Description: Guztiok'bat
Model: M2/70 Lathe
P.O.#: V-BS101524
Date: Nov 22, 2024
Page: 6 of 7



Bruce Palmer – Electrical Engineer
Description: Guztiok'bat
Model: M2/70 Lathe
P.O.#: V-BS101524
Date: Nov 22, 2024
Page: 7 of 7



I hereby certify that I am a professional electrical engineer, registered in the State of Minnesota, that I have no financial or other interest in the sale or manufacturer of the subject equipment, and that the foregoing evaluation was performed by me personally, and is to the best of my knowledge complete and accurate.

**Bruce L. Palmer, P.E.
Minnesota Registration No. 9375**

11-22-2024

Date:

Bruce L. Palmer – Electrical Engineer

To: SD Department of Labor & Industry
Att: Brent Schoulte
308 South Pierre Street
Pierre, SD 57501

Date: Nov 22, 2024

Project: PE field inspection of Guztiok'bat Model M2/70 Lathe

Project No: V-BS101524

We forward the following:

For your information:

1 copy of PE field inspection of Guztiok'bat Model M2/70 Lathe

Via: US Mail

Copy Form To:

Copy Encl To:

Remarks:

Brent,

Enclosed is your copy of the PE field inspection of Guztiok'bat Model M2/70 Lathe. The panels are used on a process line at Precision Machining & Fabrication, 14532 486th Ave, Big Stone City, SD 57216. If you have any questions feel free to call....

Thanks.

From: Bruce L. Palmer

2304 W 9th Street Albert Lea, MN 56007 Phone 507 383 6290

SOUTH DAKOTA ELECTRICAL COMMISSION

217 West Missouri Avenue, Pierre, SD 57501

Tel: 605.773.3573 Toll-Free: 1.800.233.7765 Fax: 605.773.6213 dlr.sd.gov/electrical

MACHINERY DESIGNATION APPLICATION

Entity Name: Precision Machining & Fabrication Contact Person: Blake Schmieg

Tel: (320) 304 - 1530

Address: 14532 486th Ave Big Stone City SD 57216
STREET CITY STATE ZIP

Installation Address: : 14532 486th Ave Big Stone City 57216
STREET CITY ZIP

Yes No: Entity presents application as official notice that Entity is designating the following equipment at the installation address as machinery.

MACHINE DESCRIPTION:

MATSUURA MC-800VG CNC
SER#970412468

Name of Professional Engineer involved: Bruce L Palmer License No.: MN9375 & SD9017

Please answer the following questions:

- Yes No: The machinery as a packaged unit is available in a listed form.
- Yes No: Has an electrical standard been prepared or adopted to which the machinery should conform. (e.g. NRTL or NFPA 79: Electrical Standard for Industrial Machinery)
- Yes No: The machinery is specific electrical equipment for use by the applying entity and not a line as manufactured, stored, sold, installed, or attached.
- Yes No: A label indicating the installation complies with nationally recognized standards or tests determining suitable usage for said installation in manner utilized has been adhered to machinery by 3rd party conducting field listing.
- Yes No: In the opinion of the Entity the machinery complies with NEC 670.
- Yes No: Entity accepts responsibility and liability for the machinery.
- Yes No: Entity is of the opinion the machinery is safe for the use intended.

By my signature below, I do solemnly swear the statements made herein are true and correct to the best of my knowledge and belief. Completion of this application does not guarantee approval.

Name: Bruce L Palmer

Position: Electrical Engineer

Bruce Palmer
SIGNATURE

11 / 20 / 2024
DATE

To Submit: Mail or fax to the South Dakota Electrical Commission (contact information at the top of this form).

Ensure your application includes:

- Signature and Date
- Attach Stamped Engineering plans

**BRUCE PALMER
CONSULTING ELECTRICAL ENGINEER
2304 W 9TH STREET
ALBERT LEA, MN 56007
(507) 383 6290**

**EQUIPMENT EVALUATION REPORT
Page 1 of 7**

MANUFACTURER: Matsuura Machinery USA Inc, 325 Randolph Ave #300, St Paul, MN 55102

MODEL NUMBER: MC-800VG CNC

SERIAL NUMBER: 970412468

DESCRIPTION: Matsuura Control Panel (P.O. # V-BS101524)

DATE EXAMINED: Nov 22, 2024

SCCR RATING: 5KA

1. **General conditions.** The subject equipment (“equipment”) was supplied to Precision Machining & Fabrication, 14532 486th Ave, Big Stone City, SD 57216, to be used in their production process.

1.1 This evaluation applies to only the Matsuura Model MC-800VG CNC serial # 970412468 field inspected.

2. **Standards Applied in the Evaluation.** The construction requirements of **Underwriters Laboratories’ Standards for Robots and Robotic Equipment, UL 1740, 4th Edition, dated 2018, NFPA 79 Electrical Standards for Industrial Machinery 2018 Edition, Underwriters Laboratories’ Standards for Safety for Industrial Control Equipment, UL 508a, 3rd Edition, dated 04/16/2020** (“the standard”), were employed in evaluating the equipment.

3. **Compliance with the Standard.** I have found that the equipment is in compliance with all applicable construction requirements of the Standard, as listed in this report.

Any performance testing is outside the scope of this investigation, and was not performed.

Applicable Construction Requirements of UL 1740 (2018)

Construction

- 7.0 Frame and Enclosure
 - 7.6 Bonding
 - 7.7 Parts of enclosures
- 14.0 Field Connections
 - 14.1 General
 - 14.2 Terminals
- 16.0 Stationary Robotic Equipment
- 19.0 Current-Carrying Parts
- 20.0 Conductors
 - 20.1 General
 - 20.2 Interconnecting cords and cables
 - 20.3 Interconnection of units
- 21.0 Grounding
 - 21.1 General
 - 21.2 Grounding means
 - 21.3 Terminals and leads
- 22.0 Bonding of internal parts
 - 22.1 General
 - 22.2 Construction and connection
- 26.0 Capacitors and Varistors
 - 26.1 Isolating components
 - 26.2 Across-the-line components
 - 26.3 General
- 27.0 Supply-circuit Disconnecting Means
 - 27.3 Supply conductors to be disconnected
 - 27.4 Connections to supply lines
 - 27.5 Exposed live parts
 - 27.9 Attachment plug and receptacle
- 28.0 Overcurrent Protection, Control-Circuit Conductors
- 29.0 Spacings
 - 29.2 Low-Voltage class 2 circuits
 - 29.3 Other than safety circuits
 - 29.7 Terminals and other circuits
- 30.0 Field Wiring Space
- 31.0 Separation of Circuits
- 32.0 Marking
 - 32.89 Wiring
 - 32.91 Cautionary Markings

Applicable Constructions Requirements of NFPA 79 (2018 Addition)

79.1.1.1 Thru 79.18.10.2, Annex A Thru Annex I

Applicable Construction Requirements of UL 508a (04/16/2020)

Part 1- General

Construction

All Panels	Sections 7-17
Enclosed Panels	Sections 18-27
Power Circuits	Sections 28-36
Control Circuits	Sections 37-48
Rating	Sections 49-51
Markings	Sections 52-61

Part 2- Specific

Enclosures	Sections 62-64
Industrial Machinery	Sections 65-67
Service Equip Use	Sections 73-77
Elevator Control	Sections 80
Flame Control	Sections 81-83
Air Cond & Refrig	Sections 88-92

Supplement SA- Specific

Component Require	Sections SA1-SA10
-------------------	-------------------

Supplement SB- Short Circuit Ratings

Short Circuit	Sections SB1-SB6
---------------	------------------

Appendix A

Appendix B

4. Identification of components.

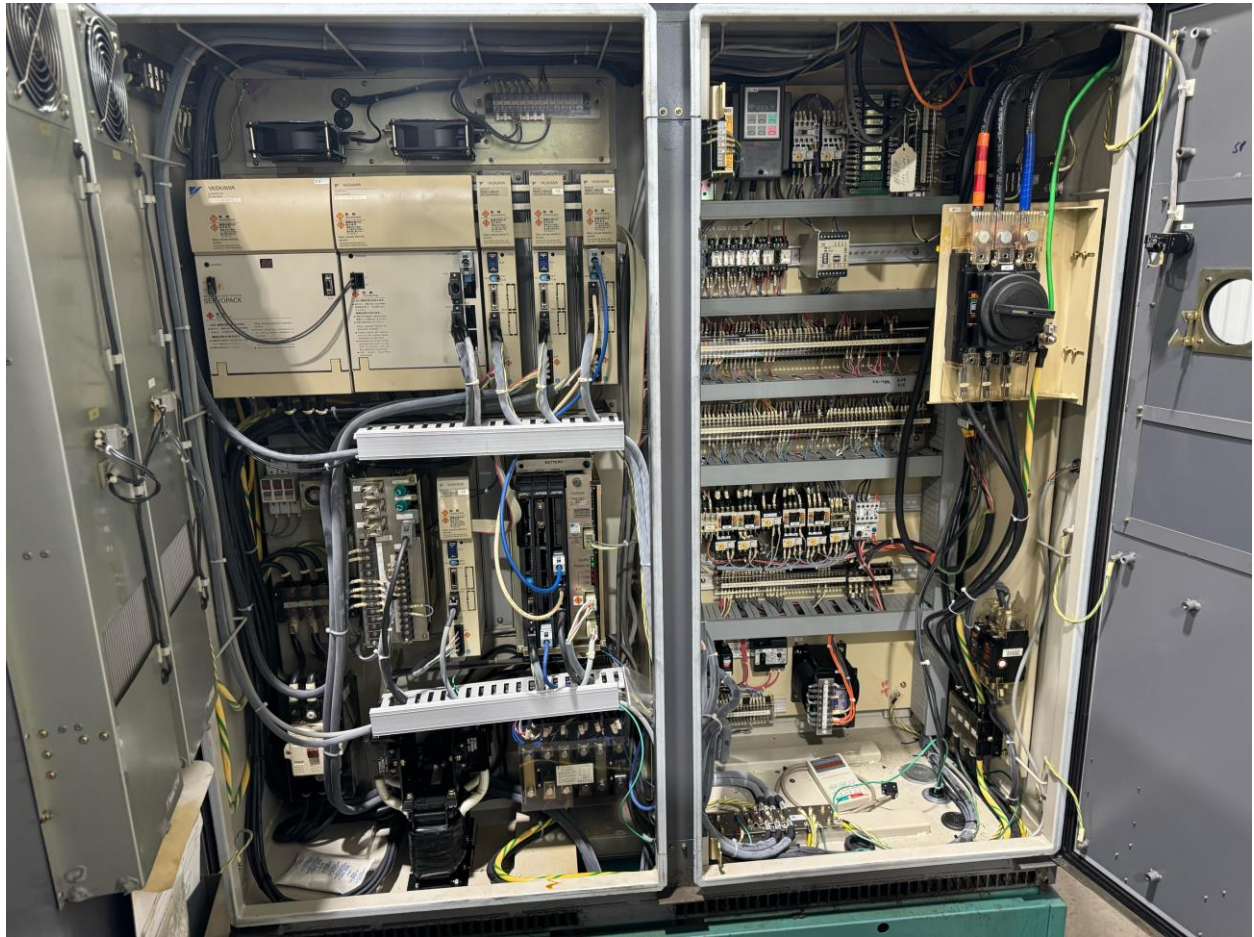
- 1) All components of the subject equipment are included in the following list.

All components are major testing laboratory listed, field listed or component recognized. Copies of the manufacturer's product literature and evidence of listing are available. In the case of non-disclosure agreements with the manufacturer, all component information cannot be printed.

Bruce Palmer – Electrical Engineer
Description: Matsuura
Model: MC-800VG CNC
P.O.#: V-BS101524
Date: Nov 22, 2024
Page: 4 of 7



Bruce Palmer – Electrical Engineer
Description: Matsuura
Model: MC-800VG CNC
P.O.#: V-BS101524
Date: Nov 22, 2024
Page: 5 of 7



Bruce Palmer – Electrical Engineer
Description: Matsuura
Model: MC-800VG CNC
P.O.#: V-BS101524
Date: Nov 22, 2024
Page: 6 of 7



Bruce Palmer – Electrical Engineer
Description: Matsuura
Model: MC-800VG CNC
P.O.#: V-BS101524
Date: Nov 22, 2024
Page: 7 of 7



I hereby certify that I am a professional electrical engineer, registered in the State of Minnesota, that I have no financial or other interest in the sale or manufacturer of the subject equipment, and that the foregoing evaluation was performed by me personally, and is to the best of my knowledge complete and accurate.

Bruce L. Palmer, P.E.
Minnesota Registration No. 9375

11-22-2024

Date:

Bruce L. Palmer – Electrical Engineer

To: SD Department of Labor & Industry
Att: Brent Schoulte
308 South Pierre Street
Pierre, SD 57501

Date: Nov 22, 2024

Project: PE field inspection of Matsuura Model MC-800VG CNC

Project No: V-BS101524

We forward the following:

For your information:

1 copy of PE field inspection of Matsuura Model MC-800VG CNC

Via: US Mail

Copy Form To:

Copy Encl To:

Remarks:

Brent,

Enclosed is your copy of the PE field inspection of Matsuura Model MC-800VG CNC. The panels are used on a process line at Precision Machining & Fabrication, 14532 486th Ave, Big Stone City, SD 57216. If you have any questions feel free to call....

Thanks.

From: Bruce L. Palmer

2304 W 9th Street Albert Lea, MN 56007 Phone 507 383 6290

MACHINERY DESIGNATION APPLICATION

Entity Name: Precision Machining & Fabrication Contact Person: Blake Schmieg
Tel: (320) 304 - 1530
Address: 14532 486th Ave Big Stone City SD 57216
STREET CITY STATE ZIP
Installation Address: : 14532 486th Ave Big Stone City 57216
STREET CITY ZIP

Yes No: Entity presents application as official notice that Entity is designating the following equipment at the installation address as machinery.

MACHINE DESCRIPTION:

MATSUURA MC-800VF CNC
SER#940410713

Name of Professional Engineer involved: Bruce L Palmer License No.: MN9375 & SD9017

Please answer the following questions:

- Yes No: The machinery as a packaged unit is available in a listed form.
- Yes No: Has an electrical standard been prepared or adopted to which the machinery should conform. (e.g. NRTL or NFPA 79: Electrical Standard for Industrial Machinery)
- Yes No: The machinery is specific electrical equipment for use by the applying entity and not a line as manufactured, stored, sold, installed, or attached.
- Yes No: A label indicating the installation complies with nationally recognized standards or tests determining suitable usage for said installation in manner utilized has been adhered to machinery by 3rd party conducting field listing.
- Yes No: In the opinion of the Entity the machinery complies with NEC 670.
- Yes No: Entity accepts responsibility and liability for the machinery.
- Yes No: Entity is of the opinion the machinery is safe for the use intended.

By my signature below, I do solemnly swear the statements made herein are true and correct to the best of my knowledge and belief. Completion of this application does not guarantee approval.

Name: Bruce L Palmer Position: Electrical Engineer
Bruce Palmer 11 / 20 / 2024
SIGNATURE DATE

To Submit: Mail or fax to the South Dakota Electrical Commission (contact information at the top of this form).

- Ensure your application includes:**
- Signature and Date
 - Attach Stamped Engineering plans

**BRUCE PALMER
CONSULTING ELECTRICAL ENGINEER
2304 W 9TH STREET
ALBERT LEA, MN 56007
(507) 383 6290**

**EQUIPMENT EVALUATION REPORT
Page 1 of 7**

MANUFACTURER: Matsuura Machinery USA Inc, 325 Randolph Ave #300, St Paul, MN 55102

MODEL NUMBER: MC-800VF CNC

SERIAL NUMBER: 940410713

DESCRIPTION: Matsuura Control Panel (P.O. # V-BS101524)

DATE EXAMINED: Nov 22, 2024

SCCR RATING: 5KA

1. **General conditions.** The subject equipment (“equipment”) was supplied to Precision Machining & Fabrication, 14532 486th Ave, Big Stone City, SD 57216, to be used in their production process.

1.1 This evaluation applies to only the Matsuura Model MC-800VF CNC serial # 940410713 field inspected.

2. **Standards Applied in the Evaluation.** The construction requirements of **Underwriters Laboratories’ Standards for Robots and Robotic Equipment, UL 1740, 4th Edition, dated 2018, NFPA 79 Electrical Standards for Industrial Machinery 2018 Edition, Underwriters Laboratories’ Standards for Safety for Industrial Control Equipment, UL 508a, 3rd Edition, dated 04/16/2020** (“the standard”), were employed in evaluating the equipment.

3. **Compliance with the Standard.** I have found that the equipment is in compliance with all applicable construction requirements of the Standard, as listed in this report.

Any performance testing is outside the scope of this investigation, and was not performed.

Applicable Construction Requirements of UL 1740 (2018)

Construction

- 7.0 Frame and Enclosure
 - 7.6 Bonding
 - 7.7 Parts of enclosures
- 14.0 Field Connections
 - 14.1 General
 - 14.2 Terminals
- 16.0 Stationary Robotic Equipment
- 19.0 Current-Carrying Parts
- 20.0 Conductors
 - 20.1 General
 - 20.2 Interconnecting cords and cables
 - 20.3 Interconnection of units
- 21.0 Grounding
 - 21.1 General
 - 21.2 Grounding means
 - 21.3 Terminals and leads
- 22.0 Bonding of internal parts
 - 22.1 General
 - 22.2 Construction and connection
- 26.0 Capacitors and Varistors
 - 26.1 Isolating components
 - 26.2 Across-the-line components
 - 26.3 General
- 27.0 Supply-circuit Disconnecting Means
 - 27.3 Supply conductors to be disconnected
 - 27.4 Connections to supply lines
 - 27.5 Exposed live parts
 - 27.9 Attachment plug and receptacle
- 28.0 Overcurrent Protection, Control-Circuit Conductors
- 29.0 Spacings
 - 29.2 Low-Voltage class 2 circuits
 - 29.3 Other than safety circuits
 - 29.7 Terminals and other circuits
- 30.0 Field Wiring Space
- 31.0 Separation of Circuits
- 32.0 Marking
 - 32.89 Wiring
 - 32.91 Cautionary Markings

Applicable Constructions Requirements of NFPA 79 (2018 Addition)

79.1.1.1 Thru 79.18.10.2, Annex A Thru Annex I

Applicable Construction Requirements of UL 508a (04/16/2020)

Part 1- General

Construction

All Panels	Sections 7-17
Enclosed Panels	Sections 18-27
Power Circuits	Sections 28-36
Control Circuits	Sections 37-48
Rating	Sections 49-51
Markings	Sections 52-61

Part 2- Specific

Enclosures	Sections 62-64
Industrial Machinery	Sections 65-67
Service Equip Use	Sections 73-77
Elevator Control	Sections 80
Flame Control	Sections 81-83
Air Cond & Refrig	Sections 88-92

Supplement SA- Specific

Component Require	Sections SA1-SA10
-------------------	-------------------

Supplement SB- Short Circuit Ratings

Short Circuit	Sections SB1-SB6
---------------	------------------

Appendix A

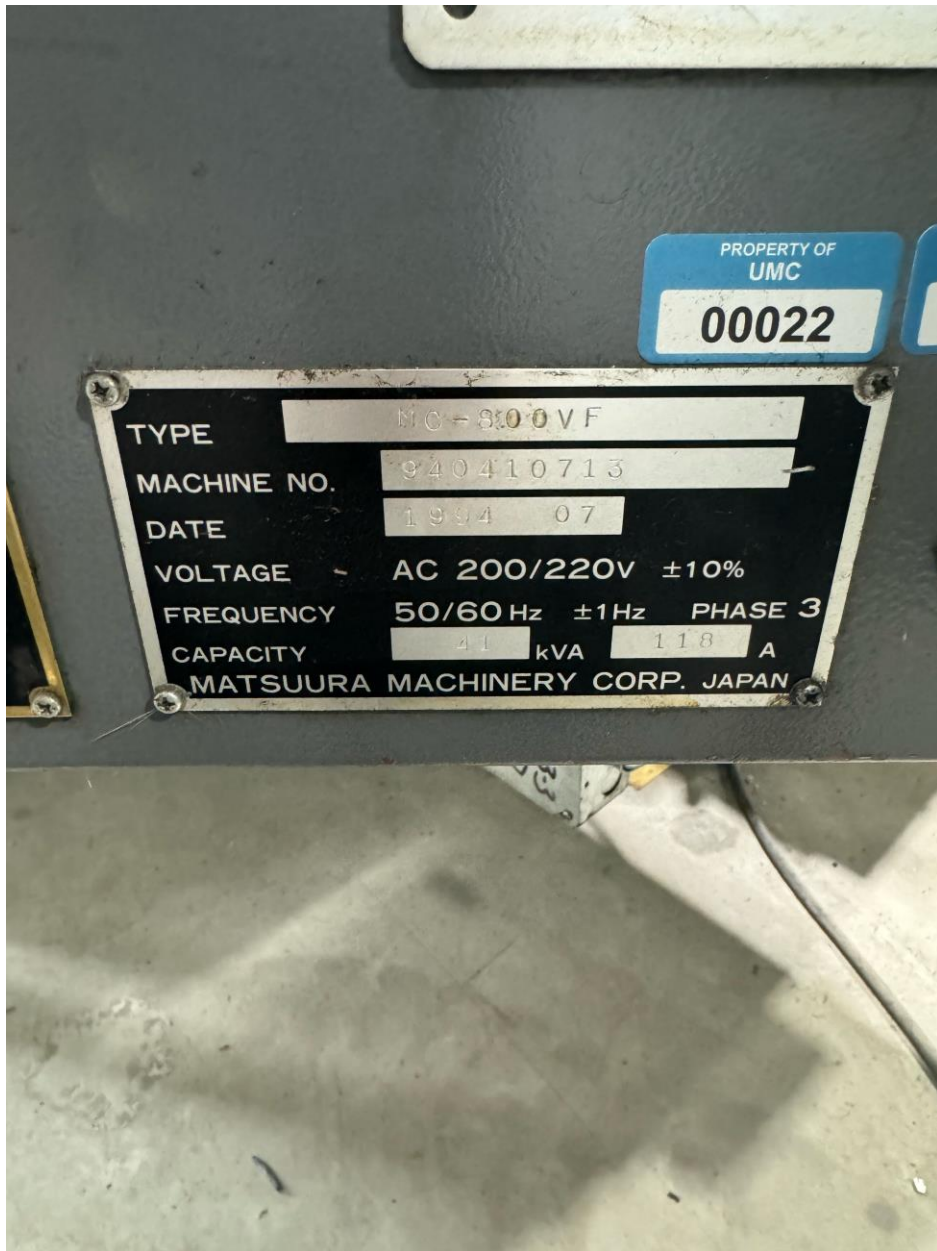
Appendix B

4. Identification of components.

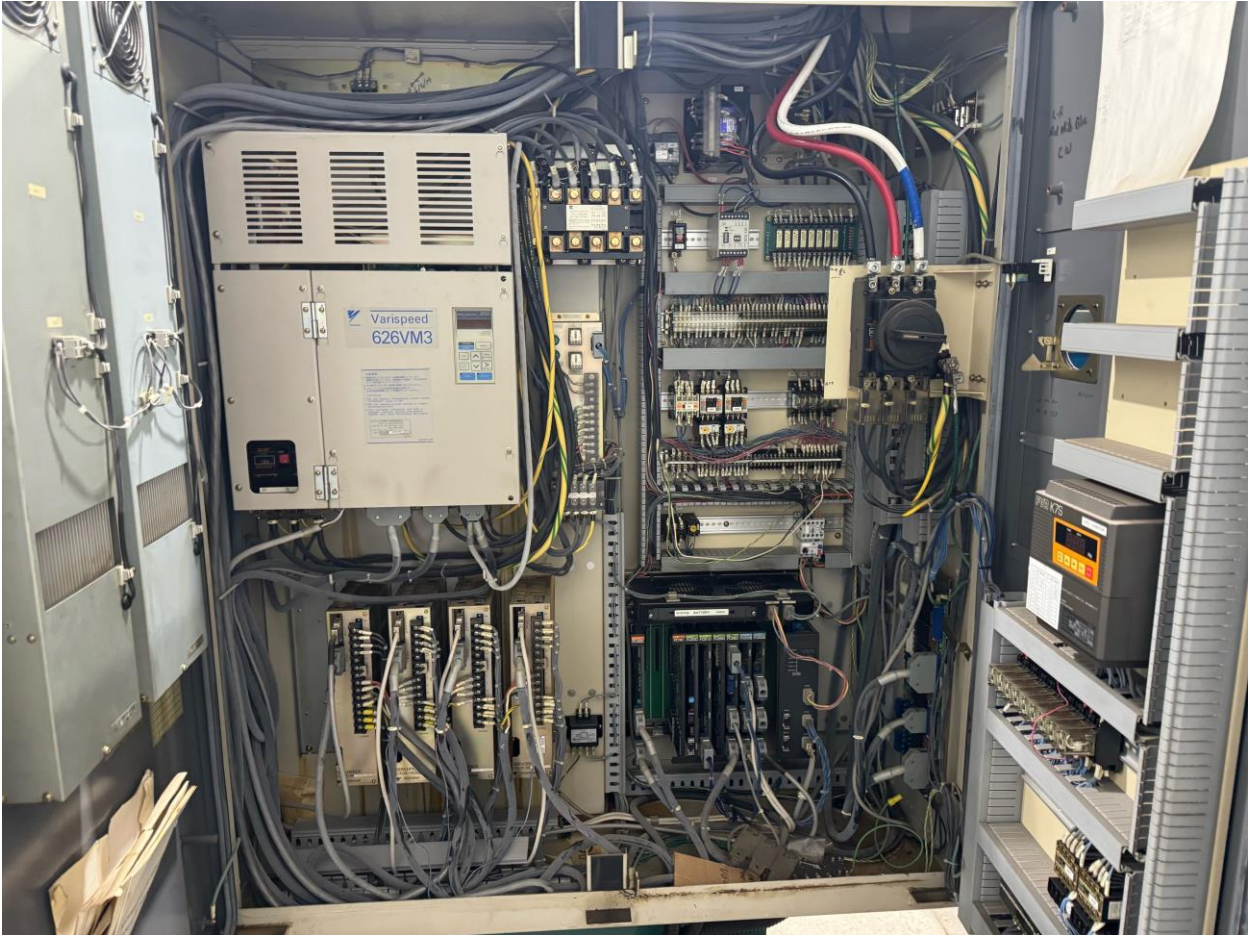
- 1) All components of the subject equipment are included in the following list.

All components are major testing laboratory listed, field listed or component recognized. Copies of the manufacturer's product literature and evidence of listing are available. In the case of non-disclosure agreements with the manufacturer, all component information cannot be printed.

Bruce Palmer – Electrical Engineer
Description: Matsuura
Model: MC-800VF CNC
P.O.#: V-BS101524
Date: Nov 22, 2024
Page: 4 of 7



Bruce Palmer – Electrical Engineer
Description: Matsuura
Model: MC-800VF CNC
P.O.#: V-BS101524
Date: Nov 22, 2024
Page: 5 of 7



Bruce Palmer – Electrical Engineer
Description: Matsuura
Model: MC-800VF CNC
P.O.#: V-BS101524
Date: Nov 22, 2024
Page: 6 of 7



Bruce Palmer – Electrical Engineer
Description: Matsuura
Model: MC-800VF CNC
P.O.#: V-BS101524
Date: Nov 22, 2024
Page: 7 of 7



I hereby certify that I am a professional electrical engineer, registered in the State of Minnesota, that I have no financial or other interest in the sale or manufacturer of the subject equipment, and that the foregoing evaluation was performed by me personally, and is to the best of my knowledge complete and accurate.

11-22-2024

Bruce L. Palmer, P.E.
Minnesota Registration No. 9375

Date:

Bruce L. Palmer – Electrical Engineer

To: SD Department of Labor & Industry
Att: Brent Schoulte
308 South Pierre Street
Pierre, SD 57501

Date: Nov 22, 2024

Project: PE field inspection of Matsuura Model MC-800VF CNC

Project No: V-BS101524

We forward the following:

For your information:

1 copy of PE field inspection of Matsuura Model MC-800VF CNC

Via: US Mail

Copy Form To:

Copy Encl To:

Remarks:

Brent,

Enclosed is your copy of the PE field inspection of Matsuura Model MC-800VF CNC. The panels are used on a process line at Precision Machining & Fabrication, 14532 486th Ave, Big Stone City, SD 57216. If you have any questions feel free to call....

Thanks.

From: Bruce L. Palmer

2304 W 9th Street Albert Lea, MN 56007 Phone 507 383 6290

G. Hutterite Colony Wiring Process

In South Dakota, we have some Hutterite colonies that are pulling homeowner permits to do wiring on the colonies. We have others that have an electrical contractor to pull permits, and there were some that were just being given wiring permits to do the wiring. We have been trying to make the process consistent in the office, but do not feel that many of these installations meet the requirement for a homeowner permit. Below are all of the rules relating to homeowner permits, as well as rules relating to the 501(d) license that I would say does not have the authority to pull permits and while authorized to do electrical work on the colonies, they would not have the authority to pull their own permit and would need an electrical contractor to pull those permits.

36-16-15. Electrical wiring--Personal residence or farmstead--Inspection and fee--Report--Violation as misdemeanor--Promulgation of rules--"Residence" defined.

No license is required of a person installing electric wiring in or on:

- (1) The person's own residence, including attached or unattached accessory structures and the parcel of land upon which the structures are situated;
 - (2) The person's own farmstead;
 - (3) The premises of a single-family dwelling unit that is in the process of being constructed if the person owns the premises and intends to occupy the premises as the person's residence when construction is complete; or
 - (4) The premises of any private, non-habitable property owned by the person that is not substantially used in connection with a trade or business of the person.
- Entrance installations in excess of sixty amperes capacity, circuits, or the installation of electrical parts of other apparatus shall be subject to inspection and payment of an inspection fee as provided by §§ 36-16-29 and 36-16-30. Failure to report this work as required by law is a Class 2 misdemeanor.

The commission shall promulgate rules, pursuant to chapter 1-26, to establish criteria for authorizing persons to install electric wiring under this section.

For the purposes of this section, the term "residence" means a detached owner-occupied single-family dwelling.

20:44:18:03. Wiring permit procedure. All electrical installations, including new installations and additional work on old installations, covered by § 20:44:18:01 and SDCL chapter 36-16, must have electrical wiring permits executed by the electrical contractor, Class B electrician, or owner doing electrical wiring on a residence or farmstead in compliance with SDCL 36-16-15. The commission shall provide the permit.

A permit consists of five forms. The procedure for executing a wiring permit is as follows:

- (1) Within 15 calendar days after starting an electrical installation which is subject to inspection, the installer shall send the white copy to the office of the commission. Not sending in the white copy within 15 calendar days after the

electrical work has started is a late wiring permit procedure and the installer is subject to a \$100 administrative fee;

(2) The hard copy shall be posted by the installer on the job site near the service entrance disconnect switch location when the electrical installation is started. The installer shall securely attach the peel-off sticker, located below the permit number on the hard copy, to the outside portion of the permanent building service. Failure to post this form and sticker is a late wiring permit procedure and subjects the installer to a \$250 administrative fee;

(3) The installer shall retain the blue copy;

(4) The installer must send the yellow and green copies to the supplier of power to the installation to have the installation energized. The power supplier shall retain the yellow copy. The power supplier shall send all green copies of active wiring permits in its possession to the commission office once each month.

Electrical contractors or Class B electricians holding current licenses may secure electrical wiring permits only from the commission office.

An owner doing electrical wiring on a residence or farmstead in compliance with SDCL 36-16-15 and 36-16-13.1 must secure wiring permits from the commission office, the power supplier, or a state electrical inspector. Electrical contractors, Class B electricians, or owners doing electrical work on their own residence or farmstead in compliance with SDCL 36-16-15 may not allow their wiring permit to be used by any other person.

20:44:18:06. Criteria for permits for single-family dwelling units under an Owner's Exemption. A permit for wiring a person's residence may only be issued if:

(1) The applicant has not applied for a permit under the Owner's Exemption in the last three years;

(2) The applicant occupies or intends to occupy the residence as his or her personal dwelling unit;

(3) The applicant does not rent or lease any part of the residence; and

(4) The applicant or applicant's spouse are the only persons performing the wiring.

A permit utilized in violation of this section will receive a final subject or final void.

20:44:22:06. Individual homeowner to comply with wiring requirements. An individual homeowner installing electrical wiring under an owner's wiring permit shall comply with all wiring requirements in this article. If an individual homeowner, who has been issued an owner's wiring permit in the last three years, requests a new owner's permit, the homeowner must provide a written explanation for the request and file the explanation and the owner's wiring permit with the commission.

36-16-2. Definition of terms.

Terms used in this chapter mean:

(7) "501(d) electrician," a person having the necessary qualifications, training and technical knowledge in wiring, installing, and repairing electrical apparatus and equipment in accordance with the administrative rules promulgated by the State

Electrical Commission, pursuant to chapter 1-26. A 501(d) licensee is restricted to wiring on 501(d) properties within the State of South Dakota. 501(d) is the reference to the federal internal revenue code that provides the exemption for a religious or apostolic association or corporation.

20:44:16:08. Electrical experience for advancement. In addition to passing the examination for an advanced license, electrical experience required for advancement to a different level of license is as follows:

(6) Apprentice electrician to 501(d) electrician - At least two years of licensed electrical experience under the supervision of a licensed electrical contractor, 501(d) electrician or Class B electrician. On-the-job experience or postsecondary schooling, or both, must include familiarization and study of the **National Electrical Code**, commercial wiring, residential or farmstead wiring, or both, electrical motor installation, electrical motor controls, and blueprint reading;

(7) 501(d) electrician to journeyman - At least four years of licensed electrical experience under the supervision of a licensed electrical contractor or Class B electrician. On-the-job experience or postsecondary schooling, or both, must include familiarization and study of the **National Electrical Code**, commercial wiring, residential or farmstead wiring, or both, electrical motor installation, electrical motor controls, and blueprint reading.

Current 501(d) Licenses in South Dakota

	Active	Non-Renewed	Inactive	Closed
501(d) License	9	10	1	27

December 18, 2024

Name
Address
City State Zip

RE: Wiring Permits

Dear NAME,

The South Dakota Electrical Commission has reviewed the process for obtaining a wiring permit for Hutterite colonies and per the board meeting on January 8th, will no longer allow homeowner wiring permits to be pulled for wiring on the colony.

All wiring completed on Hutterite colonies must follow the rules and laws of South Dakota in accordance with SDCL 36-16-27 and ARSD 20:44:18:01- 20:44:18:03. All electrical installations must be completed by a licensed electrician. Apprentice and journeyman electricians must be supervised by a class b electrician or an electrical contractor. 501(d) licenses may only work on colony installations. A wiring permit must be pulled by a licensed electrical contractor for any work that is to be completed. Any applications for a Homeowner Wiring Permit will be denied. In order to use a homeowner permit, a person must personally own the property and install the electrical wiring themselves, and it cannot be used for business purposes.

If you have further questions, please feel free to contact the Electrical Commission.

Sincerely,

Pamela Overweg
Program Director

H. South Dakota Electrical Council Membership

In the past, the electrical commission has paid a membership for all board members to be part of the South Dakota Electrical Council. Below is the cost of that membership.

Description	Rate	Amount
SD Electrical Council Membership - Commissioner	50	350

Are any of the board members utilizing that membership?