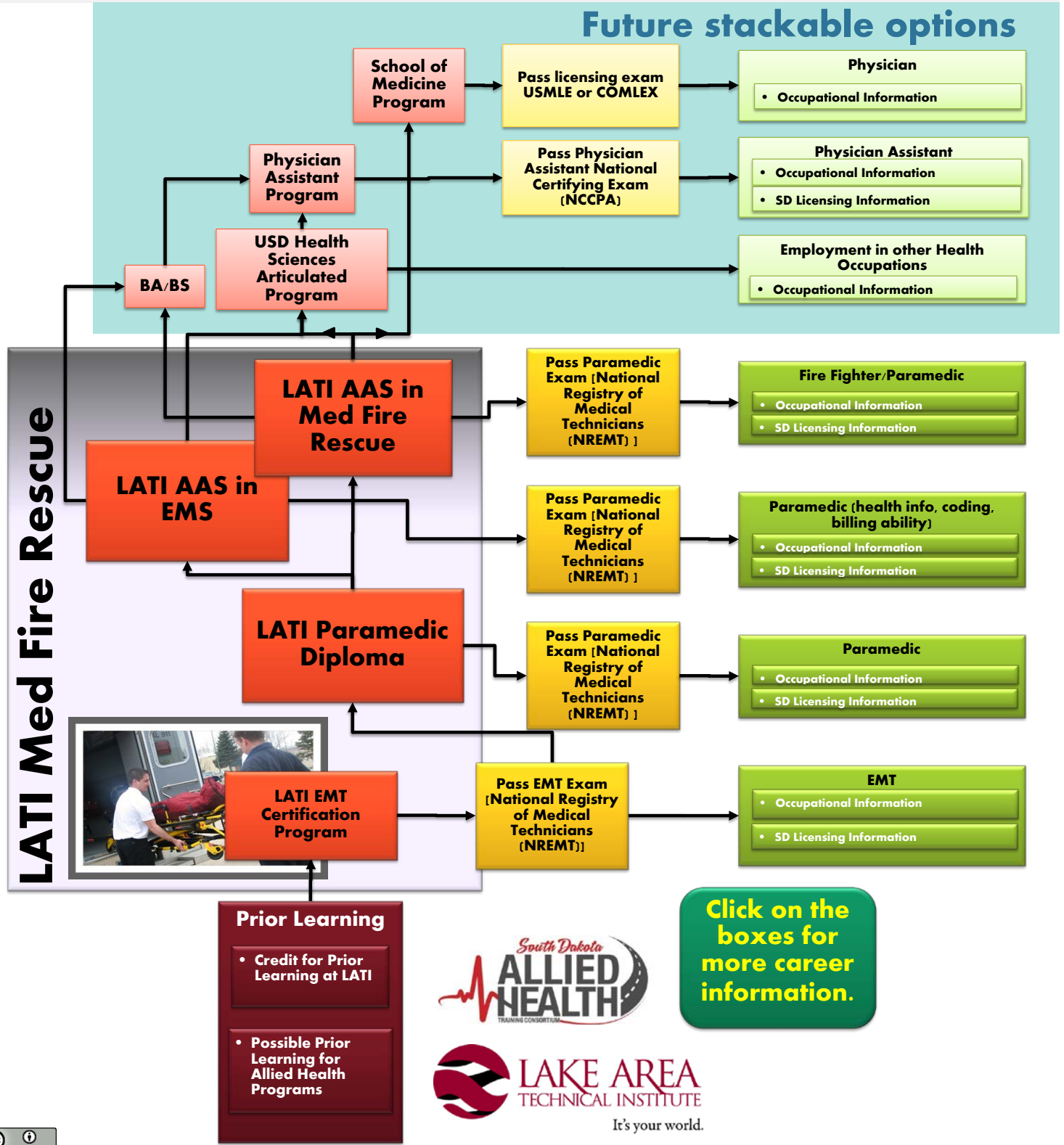


# LATI EMS Career Path Options



[This work is licensed under a Creative Commons Attribution 4.0 International License.](https://creativecommons.org/licenses/by/4.0/)

This document is 100% funded by the South Dakota Allied Health Training Consortium \$2.5 million TAACCCT grant from the U.S. Department of Labor, Employment and Training Administration. The product was created by the grantee and does not necessarily reflect the official position of the U. S. Department of Labor. The U. S. Department of Labor makes no guarantees, warranties, or assurances of any kind, express or implied, with respect to such information, including any information on linked sites and including, but not limited to, accuracy of the information or its completeness, timeliness, usefulness, adequacy, continued availability, or ownership. LATI is an equal opportunity employer. Auxiliary aids and services are available upon request to individuals with disabilities.