

South Dakota

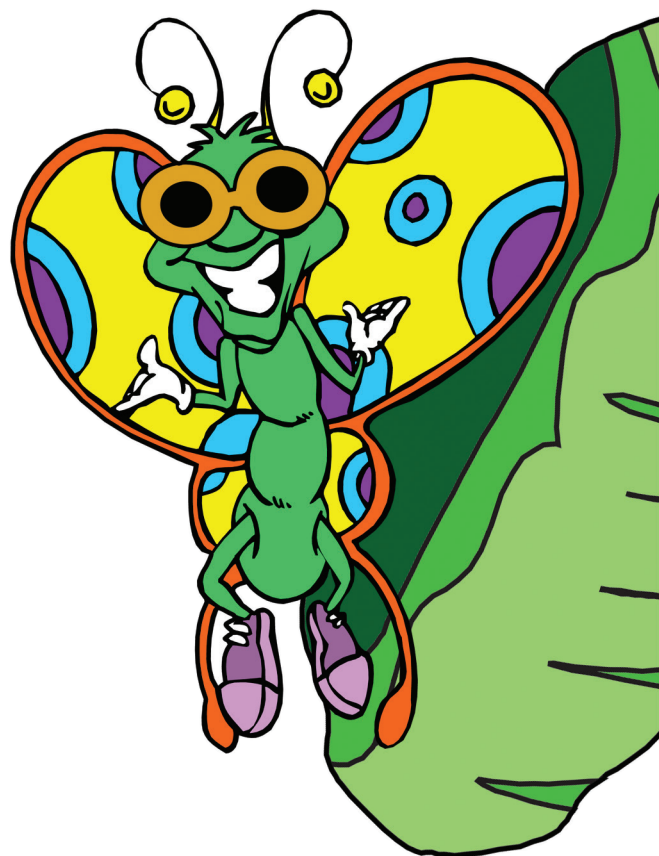


Answer Key

Career Awareness Activities Integrating Basic Academics

Kindergarten - Second Grade

Take a peek
at what you
can become!



Labor Market Information Center

South Dakota Department of Labor and Regulation

1.800.592.1881

www.dlr.sd.gov/lmic



SOUTH DAKOTA
DEPT. OF LABOR
& REGULATION

Please duplicate as needed for student use.

Answer key & activities available as PDF files at www.dlr.sd.gov/lmic

Auxiliary aids and services available upon request to individuals with disabilities. State and federal laws require the Department of Labor and Regulation to provide services to all qualified persons without regard to race, color, creed, religion, age, sex, ancestry, national origin, or disability.

USDOL Funded

Rev. 08/17